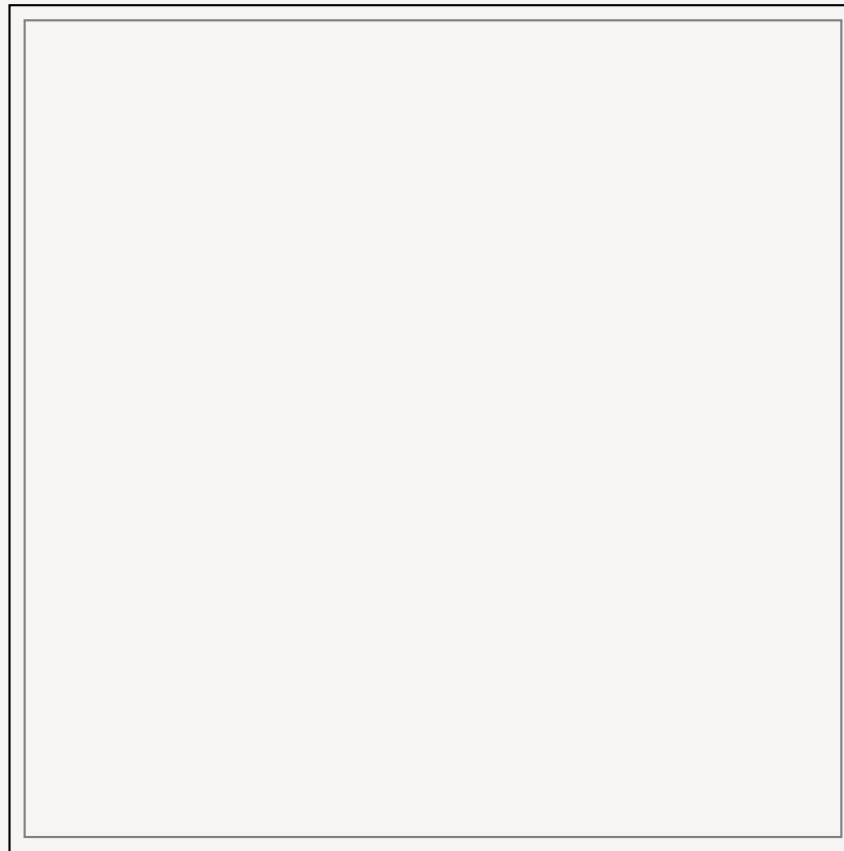
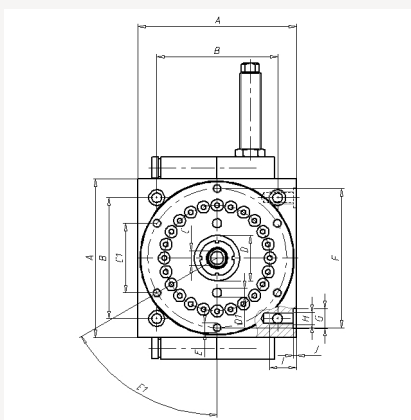
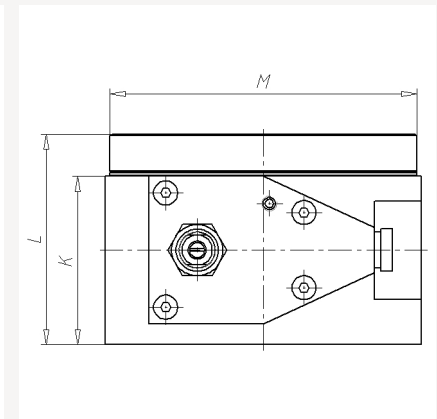
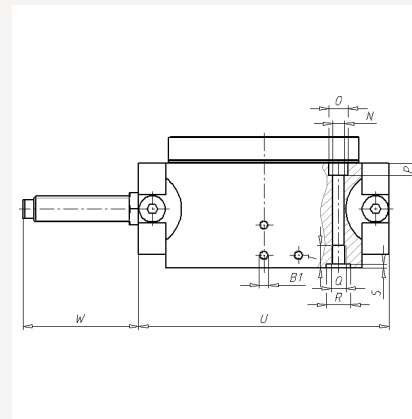
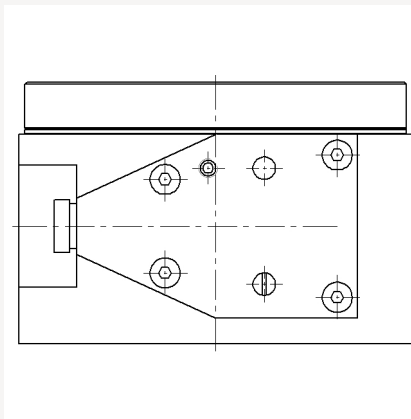
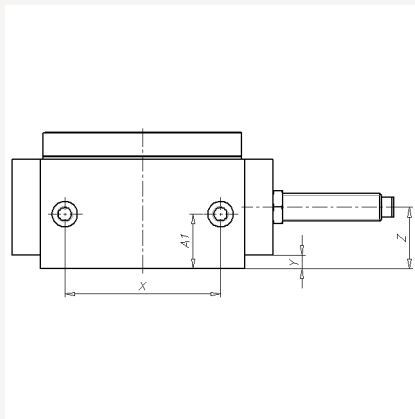


- Rundschalteinheit RSE-P1-4 mit integrierter Luftdurchführung und Drehrichtung links



**Rundschalteinheit RSE-P1-4 mit integrierter Luftdurchführung und Drehrichtung links**



## Rundschalteinheit RSE-P1-4 mit integrierter Luftdurchführung und Drehrichtung links

TYP	ARTNR	ROT	TEI	DAM	DR	A	B	C	D	E	F	G	H	I	J	K	L
RSE-P1-4-2-L-H	216126	0,360	2	hydraulisch	links	105	80	R1/8	Ø30 / 3 tief 6 x M6 / 8 tief Ø92	Ø92	Ø13	M8	18	2.1	56	70	
RSE-P1-4-3-L-H	216131	0,360	3	hydraulisch	links	105	80	R1/8	Ø30 / 3 tief 6 x M6 / 8 tief Ø92	Ø92	Ø13	M8	18	2.1	56	70	
RSE-P1-4-4-L-H	216136	0,360	4	hydraulisch	links	105	80	R1/8	Ø30 / 3 tief 6 x M6 / 8 tief Ø92	Ø92	Ø13	M8	18	2.1	56	70	
RSE-P1-4-6-L-H	216143	0,360	6	hydraulisch	links	105	80	R1/8	Ø30 / 3 tief 6 x M6 / 8 tief Ø92	Ø92	Ø13	M8	18	2.1	56	70	
RSE-P1-4-8-L-H	216148	0,360	8	hydraulisch	links	105	80	R1/8	Ø30 / 3 tief 6 x M6 / 8 tief Ø92	Ø92	Ø13	M8	18	2.1	56	70	
RSE-P1-4-12-L-H	216119	0,360	12	hydraulisch	links	105	80	R1/8	Ø30 / 3 tief 6 x M6 / 8 tief Ø92	Ø92	Ø13	M8	18	2.1	56	70	
RSE-P1-4-24-L-H	216123	0,360	24	hydraulisch	links	105	80	R1/8	Ø30 / 3 tief 6 x M6 / 8 tief Ø92	Ø92	Ø13	M8	18	2.1	56	70	

TYP	M	N	O	P	Q	R	S	T	U	V	W	X	Y	Z	A1	B1	C1	D1	E1	F1
RSE-P1-4-2-L-H	Ø102	Ø6.4	Ø10.5	6.5	M8	Ø13	2.1	12	134	30	62	80	7	31.5	28	M5	46	Ø6 / 2.5 tief	6x60	30.5
RSE-P1-4-3-L-H	Ø102	Ø6.4	Ø10.5	6.5	M8	Ø13	2.1	12	134	30	62	80	7	31.5	28	M5	46	Ø6 / 2.5 tief	6x60	30.5
RSE-P1-4-4-L-H	Ø102	Ø6.4	Ø10.5	6.5	M8	Ø13	2.1	12	134	30	62	80	7	31.5	28	M5	46	Ø6 / 2.5 tief	6x60	30.5
RSE-P1-4-6-L-H	Ø102	Ø6.4	Ø10.5	6.5	M8	Ø13	2.1	12	134	30	62	80	7	31.5	28	M5	46	Ø6 / 2.5 tief	6x60	30.5
RSE-P1-4-8-L-H	Ø102	Ø6.4	Ø10.5	6.5	M8	Ø13	2.1	12	134	30	62	80	7	31.5	28	M5	46	Ø6 / 2.5 tief	6x60	30.5
RSE-P1-4-12-L-H	Ø102	Ø6.4	Ø10.5	6.5	M8	Ø13	2.1	12	134	30	62	80	7	31.5	28	M5	46	Ø6 / 2.5 tief	6x60	30.5
RSE-P1-4-24-L-H	Ø102	Ø6.4	Ø10.5	6.5	M8	Ø13	2.1	12	134	30	62	80	7	31.5	28	M5	46	Ø6 / 2.5 tief	6x60	30.5